

PETRA • TABLE LAMP

SKU:CAMORO-201-3044.1

WEIGHT

Net Weight: 7kg | 15.4 lbs

Gross Weight: 10kg | 22.0 lbs

BULBS

Quantity: 1

Type: E27

Wattage: 40W (max)

MATERIALS

Body: Iron

Details: Brass | Marble

PACKING (approx.)

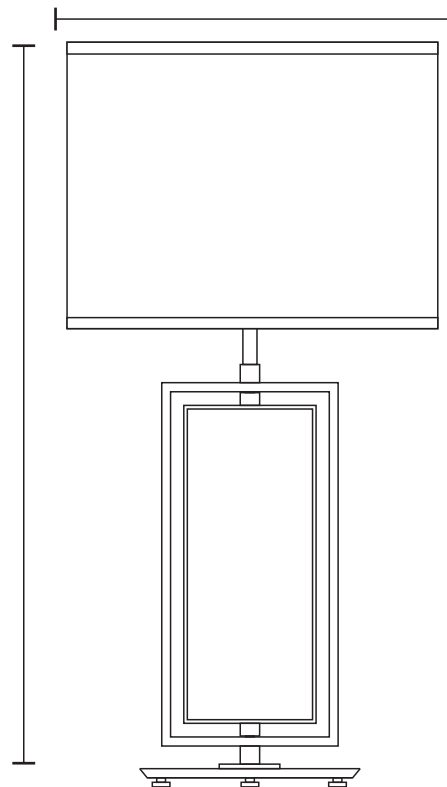
Dimensions: 36 x 36 x 64 cm

14.6 x 14.6 x 25.2 in

Volume: 0.09 m³ | 3.09 ft³

HEIGHT
71 cm | 28 in

DIAMETER
40 cm | 15.7 in



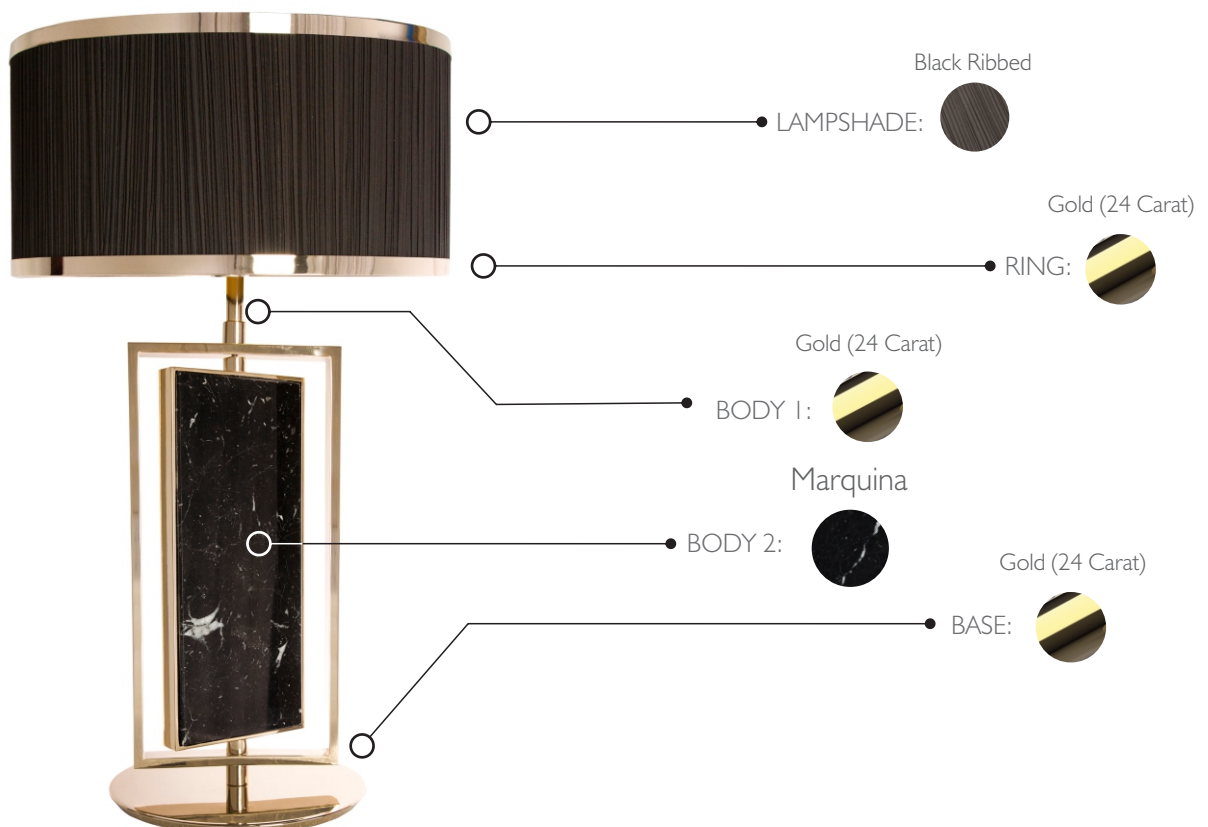
CE - Products manufactured according the European norm of security EN 60 598-1.

F - Products adjusted for installation in surfaces normally inflammable.

□ - Products of class II. The electric isolation is double or reinforced.

ES - Products with the possibility of instalation of low-energy consumption bulbs.

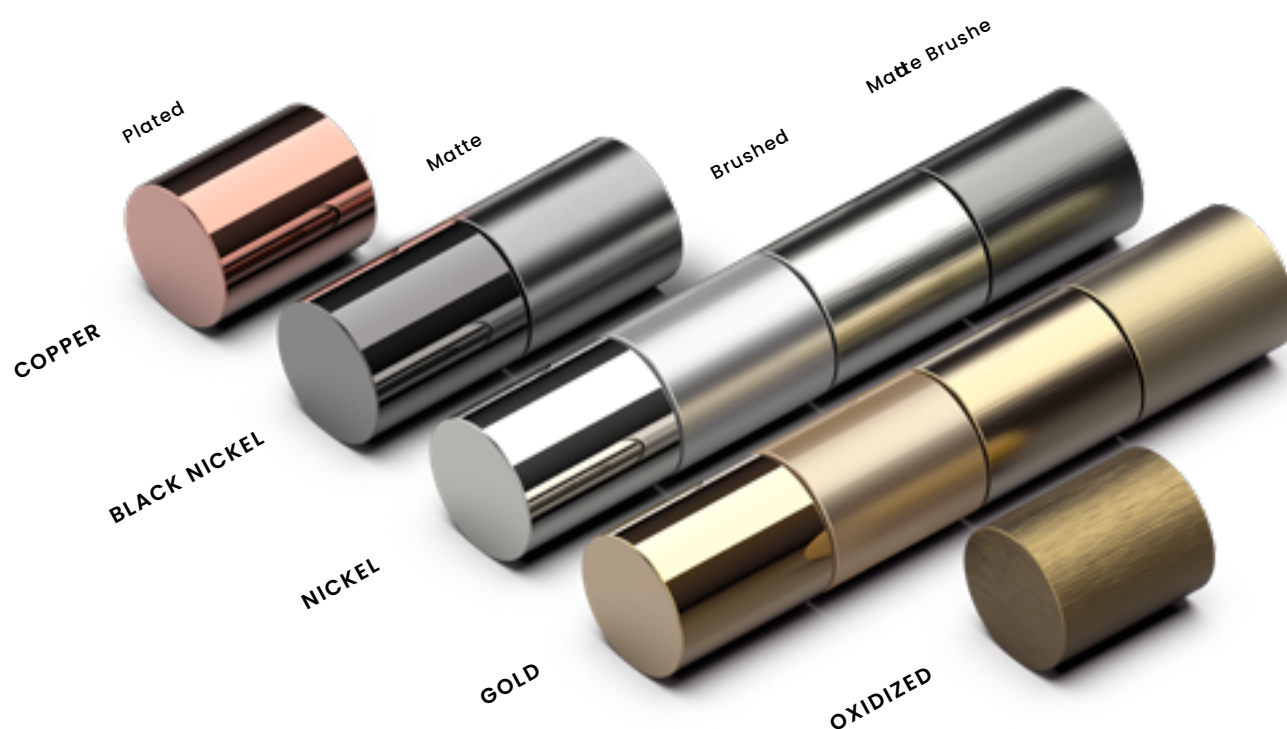
PRODUCT FINISHES & COSTUMIZATION OPTIONS



CUSTOMIZATION OPTIONS

FINISHES

Metal Finishes

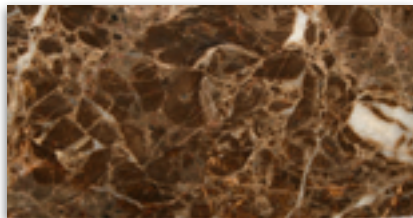


THE IMAGES USED IN THIS CATALOGUE ARE PURELY FIGURATIVE AND THE FINISHES OF THE PIECES MAY BE DIFFERENT.
THEREFORE, WE ENCOURAGE YOU TO CHECK IT WITH YOUR BUSINESS DEVELOPMENT MANAGER.

CUSTOMIZATION OPTIONS

FINISHES

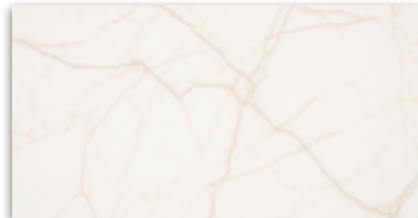
Marble Options



Emperador



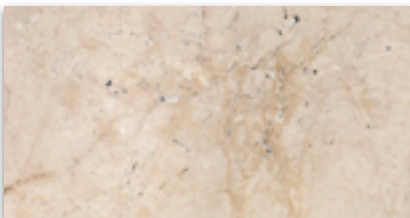
Marquina



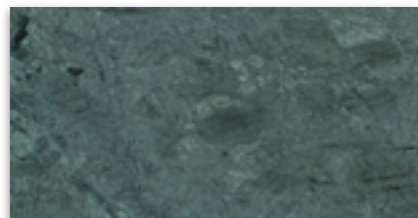
Estremoz



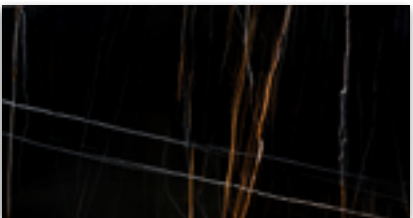
Carrara



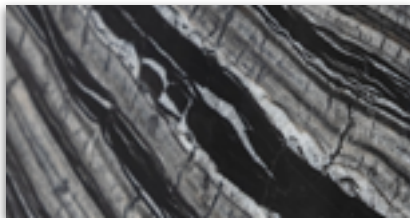
Travertino



Guatemala



Sahara Noir*



Kenya Black

*The price of Sahara Noir exhibits a distinct variation when compared to other marbles, and its current price is available upon request.